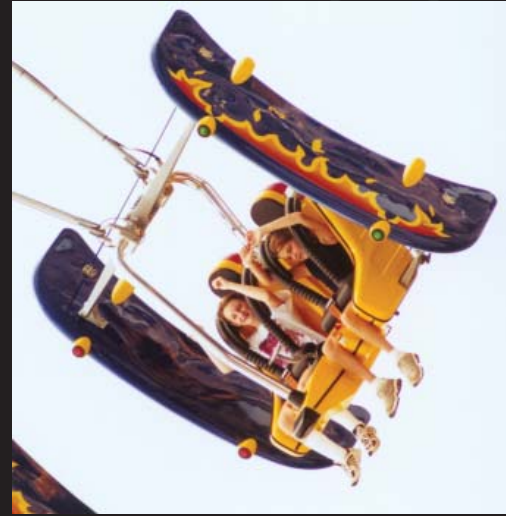


Aviator

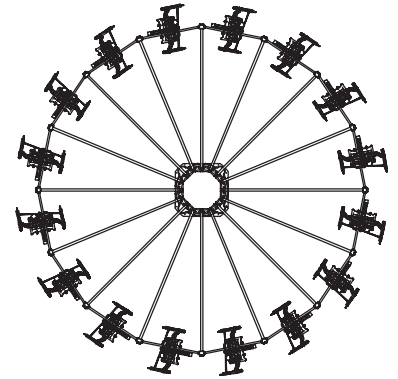
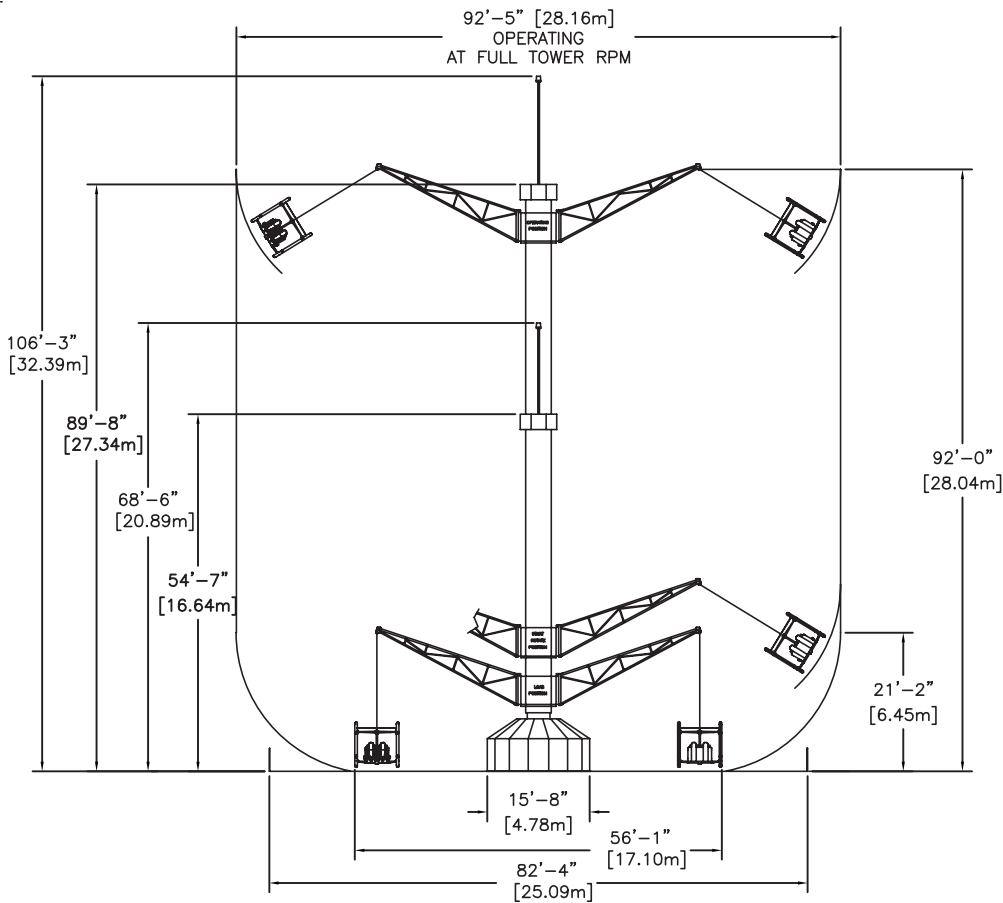


The Chance Rides Aviator offers interactivity for all “wanna-be” pilots in the crowd. The 100-foot-tall telescoping tower lifts riders into the sky, where they can control their own flights. With its sixteen two-passenger seats, the Aviator has the capacity to hold 32 riders.



316.945.6555
sales@chancerides.com
chancerides.com

Aviator



FEATURES

STANDARD FEATURES

- Interactive rider controls: climb or dive
- 16 two-passenger self-loading planes
- Eye-catching 100-foot-tall telescoping tower
- Neon lighting on tower and sweeps
- Secure overhead restraint system

SPECIFICATIONS

SEATING

Number of vehicles.....	16
Maximum number of passengers per vehicle.....	2
Maximum passenger weight per vehicle.....	340 lbs. (154 kg)
Maximum total number of passengers.....	32 adults
Maximum total passenger weight.....	5,440 lbs. (2,468 kg)
Minimum passenger height.....	48 in. (122 cm) (unaccompanied by adult)
	42 in. (107 cm) (with an adult)
Loading.....	all passengers simultaneously

PERFORMANCE

Direction of rotation.....	counterclockwise
Ride speed.....	8.6 rpm
Ride duration.....	3-4 min.
Maximum wind speed (operating).....	35 mph
Maximum wind speed (static).....	110 mph

MAXIMUM RIDE WEIGHT

Empty.....	68,000 lbs. (30,844 kg)
------------	-------------------------

CLEARANCE DIMENSIONS

Frontage width (ground).....	75 ft. (23 m)
Frontage width (air).....	90 ft. (27 m)
Height (loading).....	69 ft. (21 m)
Height (operating).....	106 ft. (32 m)

POWER REQUIREMENTS*

Total.....	160 kW
Min./Max. voltage.....	460/480 volt, 3 phase, 60 Hz

DRIVE*

Type.....	inverter controlled electric
Motor Type.....	460/480 volt, 3 phase, 60 Hz
Number of motors.....	5
Horsepower rating.....	125

LIGHTING*

Type.....	110 volt neon
-----------	---------------

* All rides can be electrically wired to operate on other specified voltage.

Specifications are effective as of publication date. Because we try to improve every Chance Rides product, these specifications are subject to change without notice. Dimensions given are approximate. For actual dimensions and installation specifications, please refer to Chance Rides foundation drawings. This ride conforms to all applicable ASTM amusement ride standards in effect on the date of manufacture.

