

# Century Wheel (Portable Model)



Everyone enjoys a view from above, especially from the top of a Chance Rides Century Wheel. With its 3,000 lights, it also puts on a show for those down below. This classic ride lifts its 15 four-to-six passenger gondolas up to a height of 20 meters.

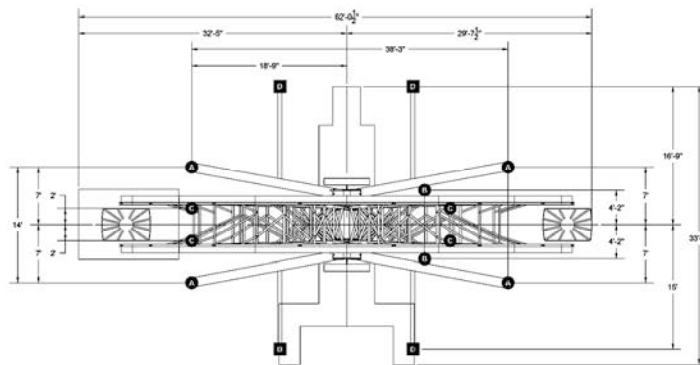
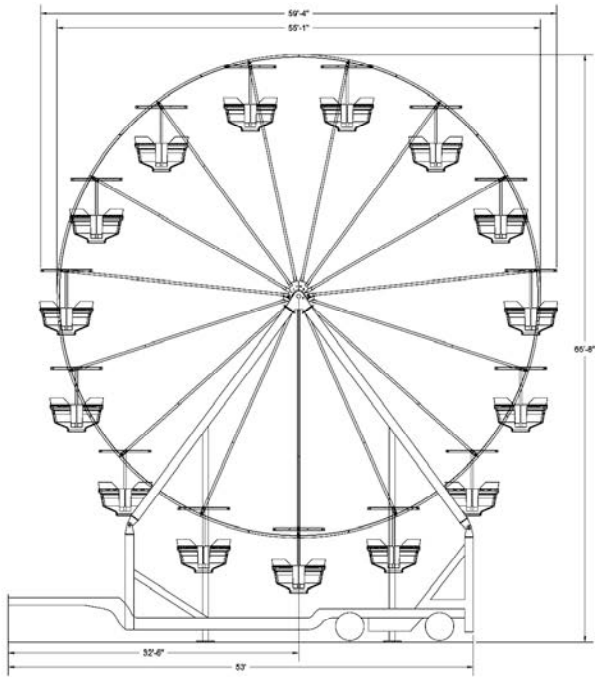


316.945.6555

[sales@chancerides.com](mailto:sales@chancerides.com)

[chancerides.com](http://chancerides.com)

# Century Wheel (Portable Model)



## FEATURES

### STANDARD FEATURES

- Wheel is mounted on one 53-foot trailer and features the quickest setup time in the industry
- Full 20-meter height provides panoramic view and powerful crowd-drawing ability
- Simultaneous loading of three gondolas per stop for five-stop loading and unloading
- Fifteen 4 to 6 passenger gondolas produce the highest hourly capacity of any 20 meter wheel in its class
- More than 3,000 multicolored incandescents lights create a spectacular appearance from both sides, increasing visibility and attracting riders from a distance

- High-back seats and automatic closing doors provide a feeling of security for riders of all ages
- Automatic gondola positioning for loading and unloading reduces operator workload
- Screen displayed diagnostics for ease of ride maintenance

### OPTIONAL FEATURES

- Rear circle sign with or without logo
- LED lighting
- Platforms, Ramps and Fencing
- Gondola canvas covers

## SPECIFICATIONS

### SEATING

Number of gondolas .....	15
Maximum number of passengers per gondola .....	4 adults or 6 children
Maximum passenger weight per gondola ...	680 lbs. (308 kg)
Maximum total number of passengers .....	60 adults or 90 children
Maximum total passenger weight ...	10,200 lbs. (4627 kg)
Minimum passenger height .....	42 in. (107 cm)
Loading .....	3 gondolas simultaneously
Maximum unbalance .....	8 adults (1,360 lbs./617 kg)

### PERFORMANCE

Direction of travel .....	clockwise / counterclockwise
Ride speed .....	3.5 rpm
Ride duration .....	2 min.
Maximum wind speed (operating) .....	35 mph
Maximum wind speed (static) .....	45 mph

### MAXIMUM RIDE WEIGHT

Empty .....	63,000 lbs. (28,576 kg)
-------------	-------------------------

### POWER REQUIREMENTS\*

Total .....	60 kW
Drive .....	30 kW
Lights .....	30 kW
Lighting .....	110 volt programable incandescent

### DRIVE\*

Type.....	variable speed electric
Motor Type.....	230/460 volt, 3 phase, 60 Hz
Number of motors.....	4
Horsepower rating.....	7.5

### STANDARD LEAD-IN CABLE

Size .....	3/0 gauge
Length .....	150 ft. (45 m)

### TRAILERING (Meets FMVSS and DOT Standards)

Height .....	13 ft., 6 in. (4 m)
Width .....	8 ft., 6 in. (2.6 m)
Length .....	53 ft. (15.9 m)
Weight rating .....	63,000 lbs. (28,576 kg)
Rear axle weight .....	38,000 lbs. (17,100 kg)
Kingpin weight .....	25,000 lbs. (11,250 kg)
Tire size .....	11 x 17.5 tubeless
Suspension type .....	air ride

\*All rides can be electrically wired to operate on other specified voltage.

Specifications are effective as of publication date. Because we try to improve every Chance Rides product, these specifications are subject to change without notice. Dimensions given are approximate. For actual dimensions and installation specifications, please refer to Chance Rides foundation drawings. This ride conforms to all applicable ASTM amusement ride standards in effect on the date of manufacture.

