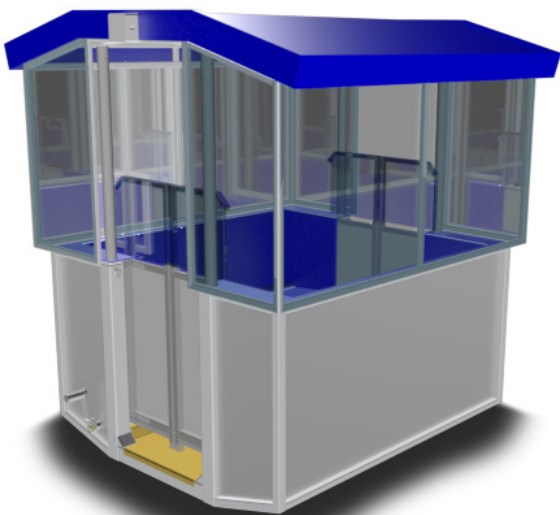


# DGW-45



The DGW 45 is Chance American Wheels' first plus 140ft open turning wheel available for both portable and fixed operations. This classic masterpiece stands at 148ft tall offering spectacular views for your guests while maximizing the visibility of your operation. The DGW 45 is an original Dutch design and manufactured under license by Chance American Wheels.

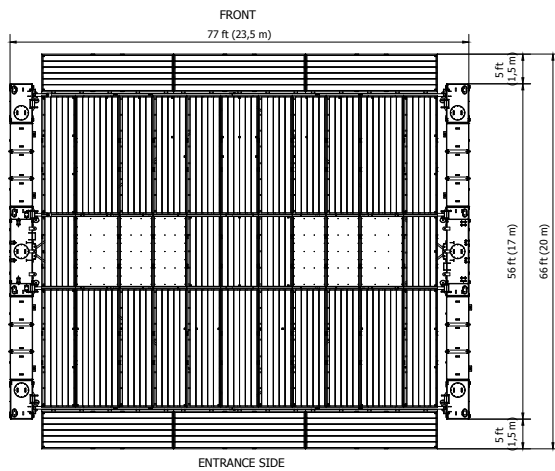
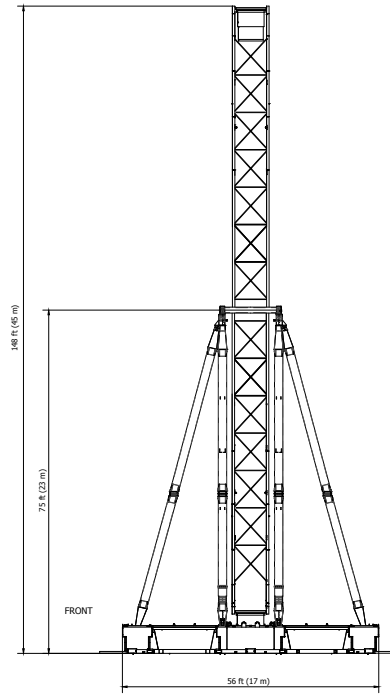
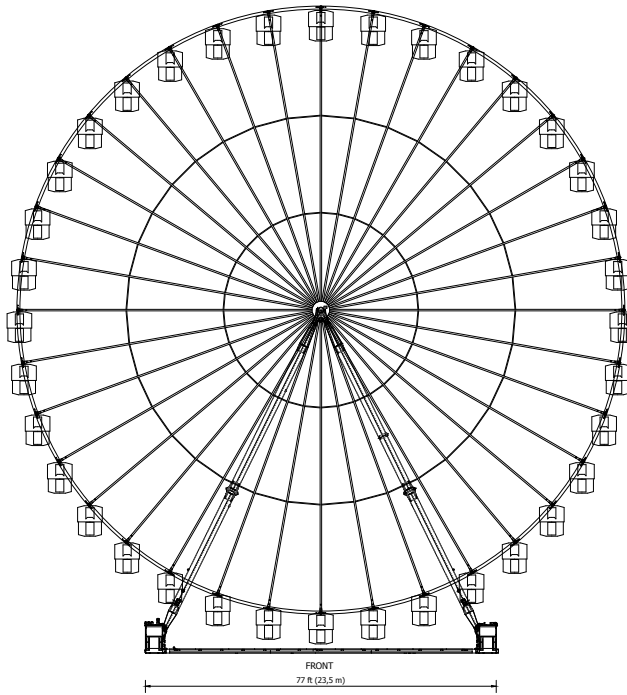


316.945.6555  
plm@chancewheelsus.com  
www.chancewheelsus.com

COPYRIGHT

# DUTCH GIANT WHEELS

WWW.DUTCHGIANTWHEELS.COM



## FEATURES

### STANDARD FEATURES

- 148ft height for spectacular views and maximum visibility to attract guests
- Simultaneous loading of 5 gondolas
- Deep, high-back gondola seats and semi-automatic closing doors offer riders a feeling of security
- Automatic gondola positioning for loading/unloading reduces operator workload
- Screen displayed diagnostics for ease of installation (no crane required)
- 6 trailer transport
- 216 passenger capacity

### OPTIONAL FEATURES

- Circle sign with graphics
- Gondola canvas covers
- Electric drive
- LED Lighting

## SPECIFICATIONS

### SEATING

|  |                           |
|--|---------------------------|
| Number of gondolas .....                       | 36                        |
| Maximum number of passengers per gondola ..... | 6                         |
| Maximum passenger weight per gondola .....     | 992 lb (450kg)            |
| Maximum total number of passengers .....       | 216                       |
| Maximum total passenger weight .....           | 35,715 lb (16,200kg)      |
| Loading .....                                  | 5 gondolas simultaneously |

### PERFORMANCE

|   |                            |
|---|----------------------------|
| Direction of rotation .....                 | clockwise/counterclockwise |
| Ride speed .....                            | 2 rpm                      |
| Ride duration .....                         | variable                   |
| Maximum wind speed (operating) .....        | 35 mph                     |
| Maximum wind speed (static w/gondolas)..... | 80 mph                     |

### MAXIMUM RIDE WEIGHT

|             |                         |
|-------------|-------------------------|
| Empty ..... | 264,550 lb (120,000 kg) |
|-------------|-------------------------|

### POWER REQUIREMENTS

|                         |                          |
|-------------------------|--------------------------|
| Total .....             | 250 kW                   |
| Min./Max. voltage ..... | 400 volt, 3 phase, 60 Hz |

### DRIVE

|                        |                          |
|------------------------|--------------------------|
| Type .....             | variable speed electric  |
| Motor Type .....       | 400 volt, 3 phase, 60 Hz |
| Number of motors ..... | 4                        |

### LIGHTING

|            |     |
|------------|-----|
| Type ..... | LED |
|------------|-----|

Specifications are effective as of publication date. Because we try to improve every Chance Rides product, these specifications are subject to change without notice. Dimensions given are approximate. For actual dimensions and installation specifications, please refer to Chance Rides foundation drawings. This rides conforms to all applicable ASTM amusement ride standards in effect on the date of manufacture.

