



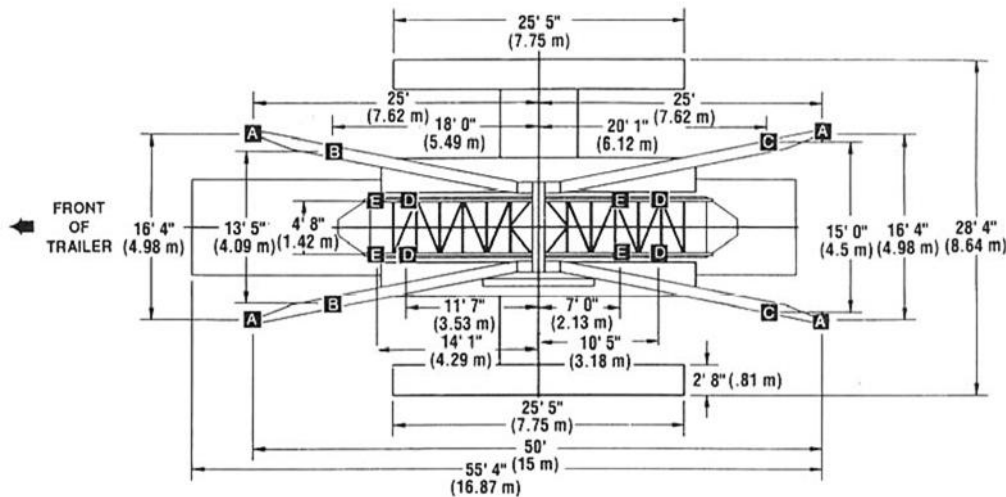
Pharaoh's Fury (Portable Model)

Swinging in an arc over 43 feet high, the Pharaoh's Fury takes passengers from horizontal to vertical. You'll have all 48 to 60 riders screaming as the boat plunges down. The Pharaoh's Fury is also available in various themes, including the Sea Dragon.



316.945.6555 | sales@chancerides.com | chancerides.com

Pharaoh's Fury (Portable Model)



FEATURES

STANDARD FEATURES

- 10 simultaneously loading seats accommodating 40 adults or 60 children for increased hourly capacity
- All-electric drive system for smooth, clean operation
- Portable model features one-trailer portability for faster set-up and tear down without forklifts or cranes

OPTIONAL FEATURES

- Eye-catching lighting package features Pharaoh's Fury sign and triangle sign, vehicle and tower leg lighting to attract riders
- Sea Dragon theming
- Galvanized sweeps and seat frames

SPECIFICATIONS

SEATING

Number of seats.....	10
Maximum number of passengers per seat.....	4 adults or 6 children*
Average passenger weight per car.....	680 lbs.
Maximum total number of passenger.....	40 adults or 60 children
Maximum total passenger weight.....	6,800 lbs.
Minimum passenger height.....	48 in. (unaccompanied by adult)
Loading.....	all passengers simultaneously
Maximum unbalance.....	8 adults (1,360 lbs.)
Lap bars.....	semi-automatic (mechanical latch, air release)

PERFORMANCE

Direction of travel	65° maximum swing from center
Ride speed	39 ft. per second
Ride duration (maximum).....	1.5-2 min.
Maximum wind speed (operating).....	25 mph
Maximum wind speed (static).....	50 mph

CLEARANCE DIMENSIONS

Frontage width (ground).....	60 ft.
Frontage width (air) at 45 ft.	80 ft.
Height	56 ft.
Depth.....	31 ft.
Drive.....	variable frequency electric

POWER REQUIREMENTS

Total.....	70 kW
Motor.....	45 kW
Lights.....	25 kW
Min./Max. line voltage.....	208/230 volt wye, 3 phase, 60 Hz

DRIVE*

Type.....	variable speed electric
Motor type.....	460 volt, 3 phase, 60 Hz
Number of motors.....	4
Horsepower rating.....	15

LIGHTING*

Type.....	LED
-----------	-----

STANDARD LEAD-IN CABLE

Size.....	4/0 gauge
Length.....	100 ft.

TRAILERING (Meets FMVSS and DOT Standards)

Height.....	13 ft., 6 in.
Width.....	8 ft., 6 in.
Length.....	53 ft.
Total weight.....	55,000 lbs.
Rear axle weight.....	33,500 lbs.
Kingpin weight.....	21,500 lbs.
Tire size.....	11 x 17.5 (tubeless)
Suspension type.....	air ride
Towers lift into position with trailer-mounted hydraulic cylinders.	

* All rides can be electrically wired to operate on other specified voltage

Specifications are effective as of publication date. Because we strive to improve every Chance Rides product, these specifications are subject to change without notice. Dimensions are approximate. For actual dimensions and installation specifications, please refer to Chance Rides foundation drawings. This ride conforms to all applicable ASTM amusement ride standards in effect on the date of manufacture.

